

Open the Statistics app.

Tap Edit, Clear All.

The data below shows the average Australian household size (people per household) against time (the number of years since 1910).

1	4.5
11	4.4
23	4
37	3.8
44	3.6
51	3.6
56	3.5
61	3.3
66	3.1
71	3
76	2.9
81	2.8
86	2.6
91	2.6
96	2.6

Enter the years since 1910 into **list1**.

Enter the average household size into **list2**.

	list1	list2	list3
1	1	4.5	
2	11	4.4	
3	23	4	
4	37	3.8	
5	44	3.6	
6	51	3.6	
7	56	3.5	
8	61	3.3	
9	66	3.1	
10	71	3	
11	76	2.9	
12	81	2.8	
13	86	2.6	
14	91	2.6	
15	96	2.6	
16			
17			
18			

Tap **SetGraph**.

Ensure that just StatGraph1 has a tick in its box and all other boxes are clear.

Tap **Setting...** to open the Set StatGraphs window.

	list1		
1			
2			
3			
4			
5			
6			
7			
8			
9			
10			
11			
12			
13			
14	91	2.6	
15	96	2.6	
16			
17			
18			

Draw should be On.

Use the drop down menus to set

Type: xyLine

XList: list1


YList: list2

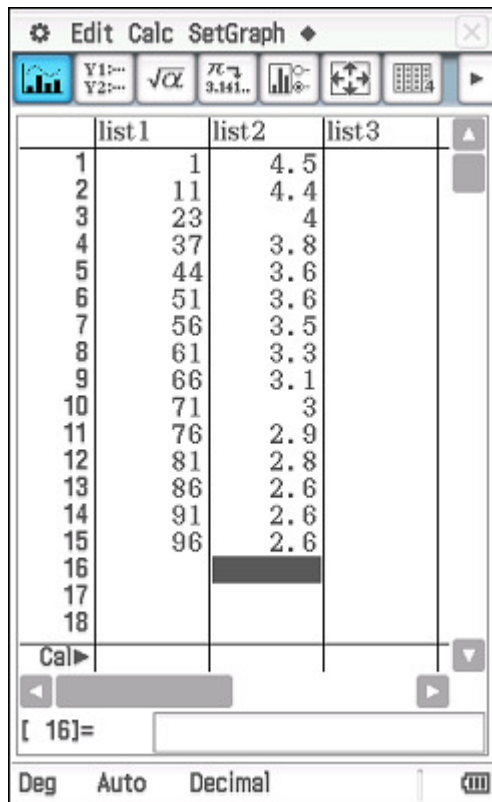
Freq: 1


Mark: square

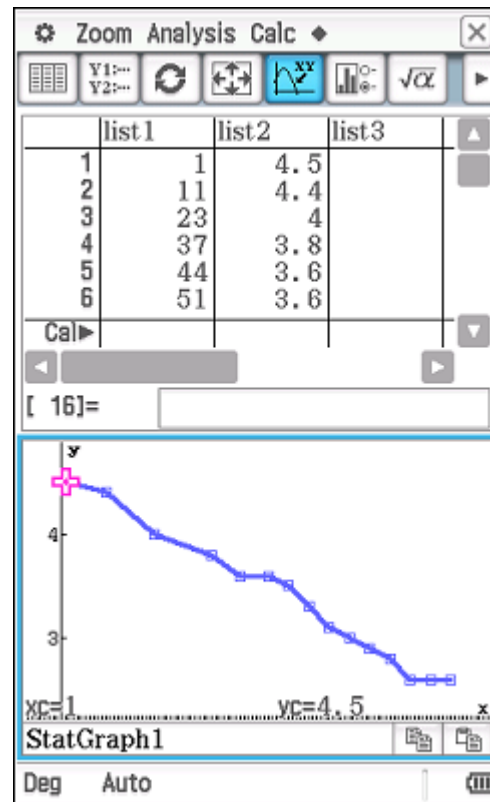
Tap **Set** to confirm your settings.


	list1	list2	
1			
2			
3			
4			
5			
6			
7			
8			
9			
10			
11			
12			
13			
14	91	2.6	
15	96	2.6	
16			
17			
18			

Tap the DrawGraph icon .

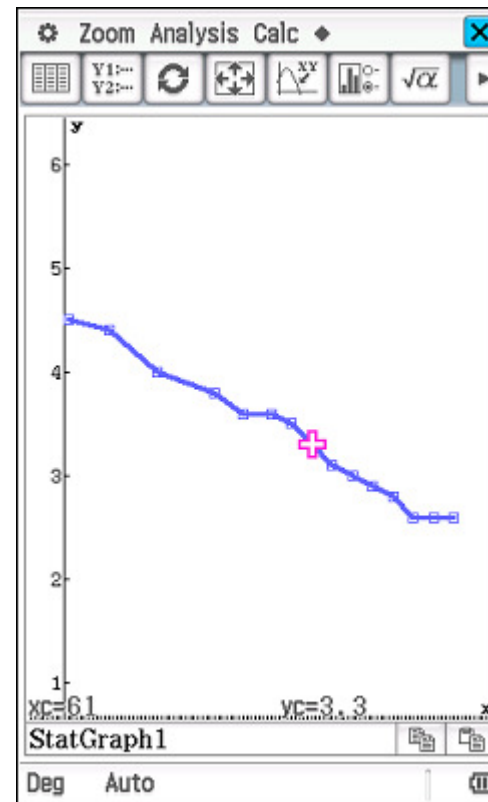



Tap  and observe that the x and y coordinates of the first point are displayed at the bottom of the screen (xc = 1, yc = 4.5).



Tap Resize .

Now use the cursor key to move left and right through the 14 points of the time series.



Tap close  in the top right hand corner of the screen.

