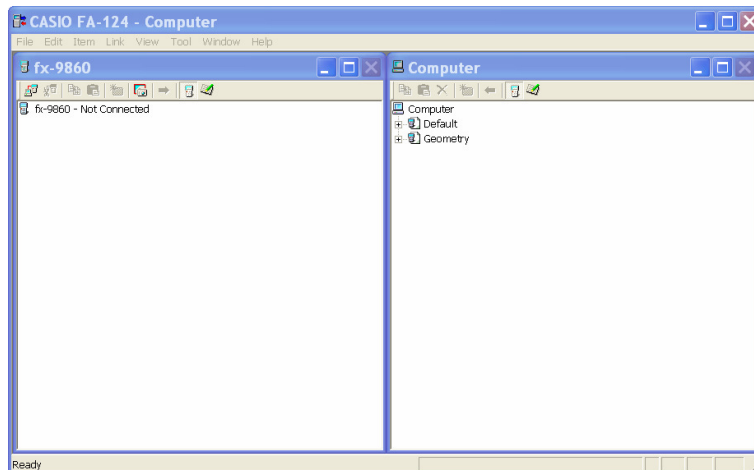


# - **fx-9860G AU** content management -

*Installing add ins and managing files.*



Written by Anthony Harradine and Alastair Lupton, February 2007, WIP.



# **Contents.**

<b>1. Introduction.</b>	<b>3</b>
<b>2. Connecting a hand held fx-9860 to FA-124</b>	<b>4</b>
<b>3. Installing an Add In into a hand held fx-9860</b>	<b>5</b>
<b>4. Transferring content from a PC into a hand held fx-9860</b>	<b>7</b>

## 1. Introduction.

The functionality of a CASIO *fx-9860 AU* (hereafter HH for Hand Held) can be significantly enhanced by

- the installation of Add In's.
- the use of content that can stored as files.

These files can include things like programs, geometry constructions, data and eActivities.

Files can be stored on a HH or a PC, and can be transferred between the two. This transfer uses CASIO FA-124 (hereafter FA-124), free software that comes with your HH upon purchase.

This document details the simplest way to install Add In's and transfer content.

**Before proceeding, be sure you have installed CASIO FA-124 on your PC<sup>1</sup>.**

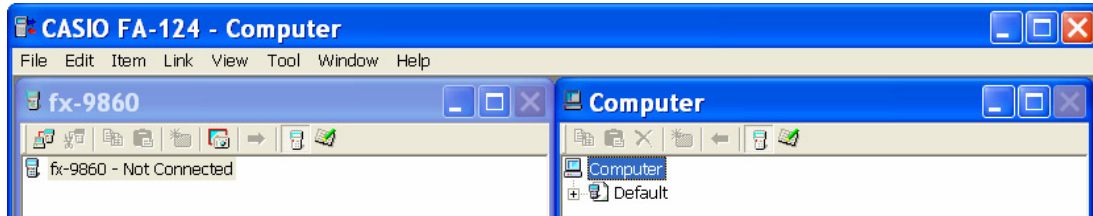
---

<sup>1</sup> When installing, you may be asked a question (by Windows) about the installation of the 'CESG502 USB' drivers. It may say they are 'not signed'. Do not be alarmed by this message and **be sure to say 'Yes' to the installation**. Failure to do this will result in your HH not being able to communicate with FA-124 via your PC.

## 2. Connecting a HH to FA-124.

*This is the first step in many operations involving a HH.  
The sequence of the three steps required is of importance.*


### 1. Open FA-124. You should see



### 2. Plug in your HH to a USB port of your PC using the cable supplied.

If the default settings in the LINK menu of your HH have not been changed (see left) then the act of plugging in the USB cable will activate the Receiving... mode required for connection.



If this does not occur then it is recommended that you go to  and alter the settings to the above, then repeat the "plug in" process

### 3. Click the connection icon

The content of your HH will be accessed and displayed on **fx-9860** side of the window (left).

The files stored in FA-124 are displayed on the **Computer** side of the window (right). These files actually reside in the "C" drive of your PC at  
C:\Documents and Settings\\*\*\*user name\*\*\*\My Documents\CASIO\FA-124

### 3. Installing an Add In into a HH.

Add In's can be obtained from the internet.

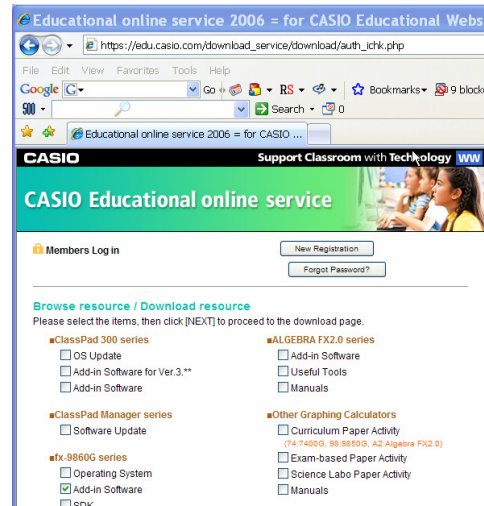
A geometry Add In is available from

<http://edu.casio.com>

CASIO's Worldwide Education Website.

(click on Downloads)

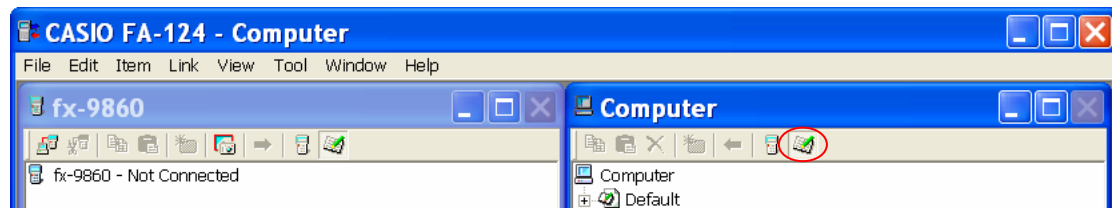
You will need to register/log on to this website and provide some product details that are recorded on the back of your HH to obtain this Add In



Add In's are g1a files. They need to be placed in the storage memory of your HH.

Once downloaded, remove the g1a file from the zipped folder and place it somewhere convenient (like your desktop).

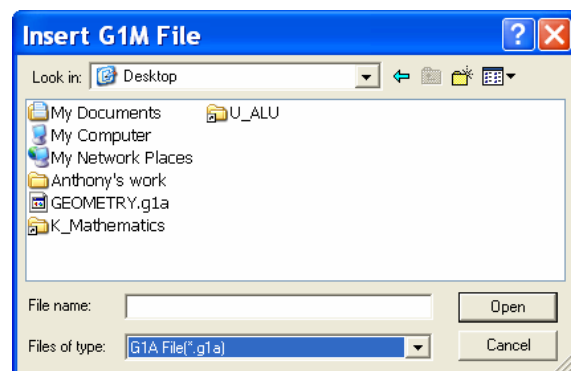
Open FA-124 and click on the storage memory icon circled below



Right click the **Default** icon and select **Import fx-9860 File**.


Change the **Files of type:** drop down menu to **G1A Files(\*g1a)**.

Use the **Look in:** drop down menu to find and open your g1a file.



Once the Add In has been imported into FA-124 in this way you need to establish a connection between your HH and FA-124 so that it may be transferred (see page 4).

The transfer is done by dragging the g1a from the **Computer** side into the **fx-9860** side of FA-124.

It can be dropped into the Connected HH icon  User1 .  
The "plus cursor" will indicate a suitable dropping location.

The Add In is "installed" in your HH.

The connection and transfer process can be repeated with additional hand helds.

#### 4. Transferring content from a PC into a HH.

Files that are obtained from external sources like the internet are either g1m files (programs or geometry) or g1e files (eActivities).

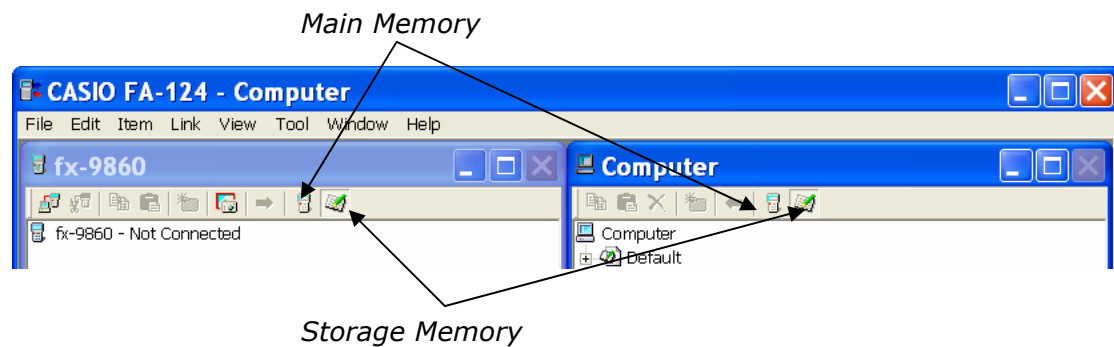
These files can need to be imported into the Computer side of FA-124 before they can be transferred into a connected HH (the fx-9860 side of FA-124).

This process is very similar to working with an Add In.

- Right click the default icon (or similar)
- Import fx-9860 File
- Change file type and location as required
- Connect HH
- Drag files into HH side of FA-124

g1m files can be imported into the *Main Memory* of the **Computer/fx-9860** or the *Storage Memory* of the **Computer/fx-9860**. All other file types can only be imported into *Storage memory*.

Moving between the two parts of the memory is done via two icons



Note: A change on one side automatically changes the other side.